

SAFETY PRECAUTIONS WARNINGS



Risk of fire or electric shock. Basic safety precautions should always be followed when using electrical equipment. This product must be installed in accordance with the applicable installation code by a person familiar with the construction and operation of the product and the hazards involved.



Disconnect power to all circuits before wiring fixture.
Install in accordance with all national, state, and local codes.
Do not connect to an ungrounded supply.
Read all fixture markings and labels to ensure correct installation of fixture.

CAN ICES-005 (A) / NMB-005 (A)

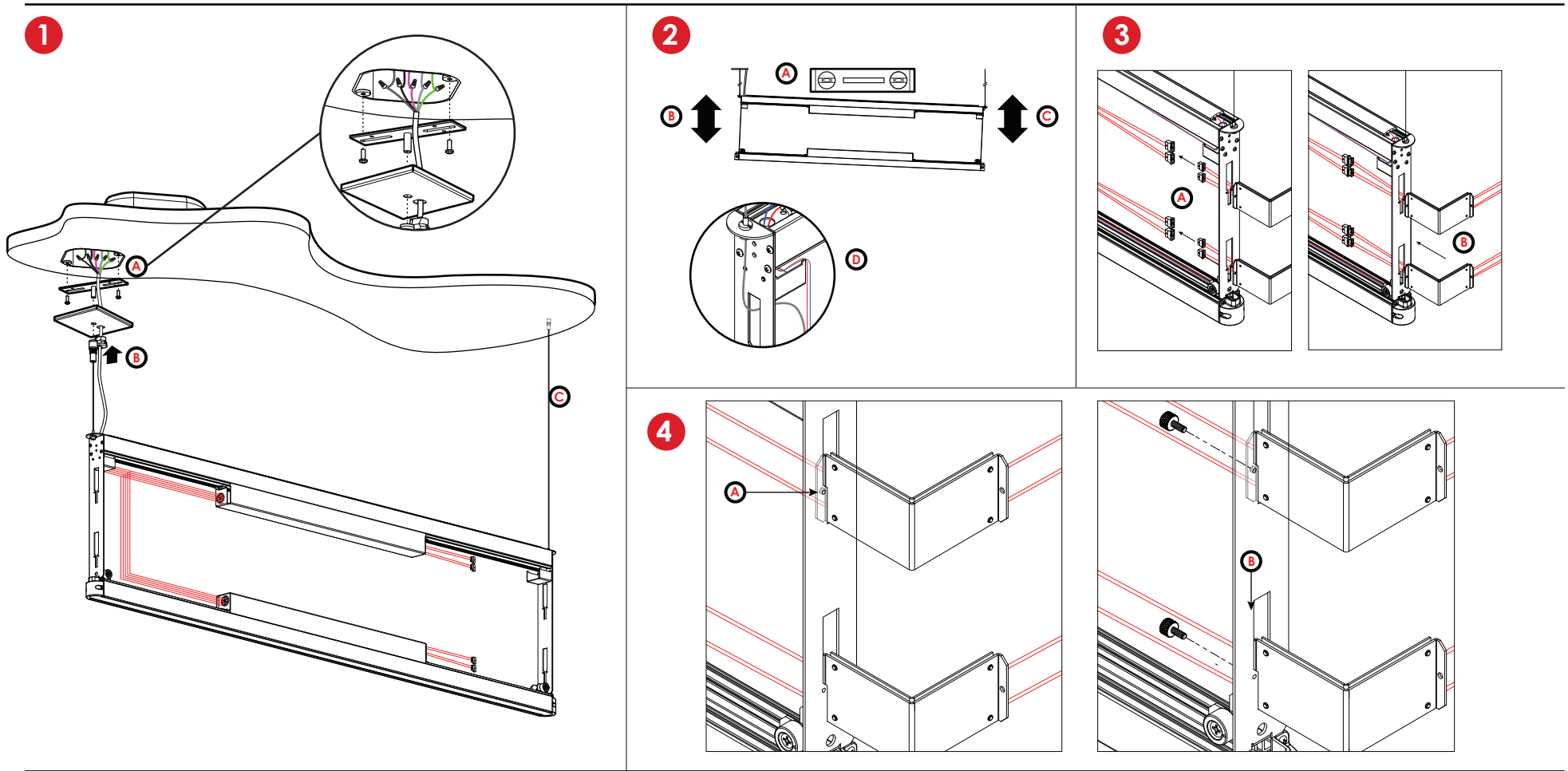
FCC Compliance Statement

This device complies with part 15 of the FCC Rules. Operation is subject to the following two conditions: (1) This device may not cause harmful interference, and (2) this device must accept any interference received, including interference that may cause undesired operation. This equipment has been tested and found to comply with the limits for a Class A digital device, pursuant to part 15 of the FCC Rules. These limits are designed to provide reasonable protection against harmful interference when the equipment is operated in a commercial environment. This equipment generates, uses, and can radiate radio frequency energy and, if not installed and used in accordance with the instruction manual, may cause harmful interference to radio communications. Operation of this equipment in a residential area is likely to cause harmful interference in which case the user will be required to correct the interference at his own expense.

ISED Canada Statement / Déclaration pour ISDE Canada

This class A lighting equipment complies with Innovation, Science and Economic Development (ISED) Canada Standard for radio interference-causing equipment ICES-005, 5th edition.

Ce matériel d'éclairage de classe A est conforme avec la norme sur le matériel brouilleur radio NMB-005, 5ième édition, publié par innovation, science et développement économique (ISDE) Canada.



INSTALLATION STEPS

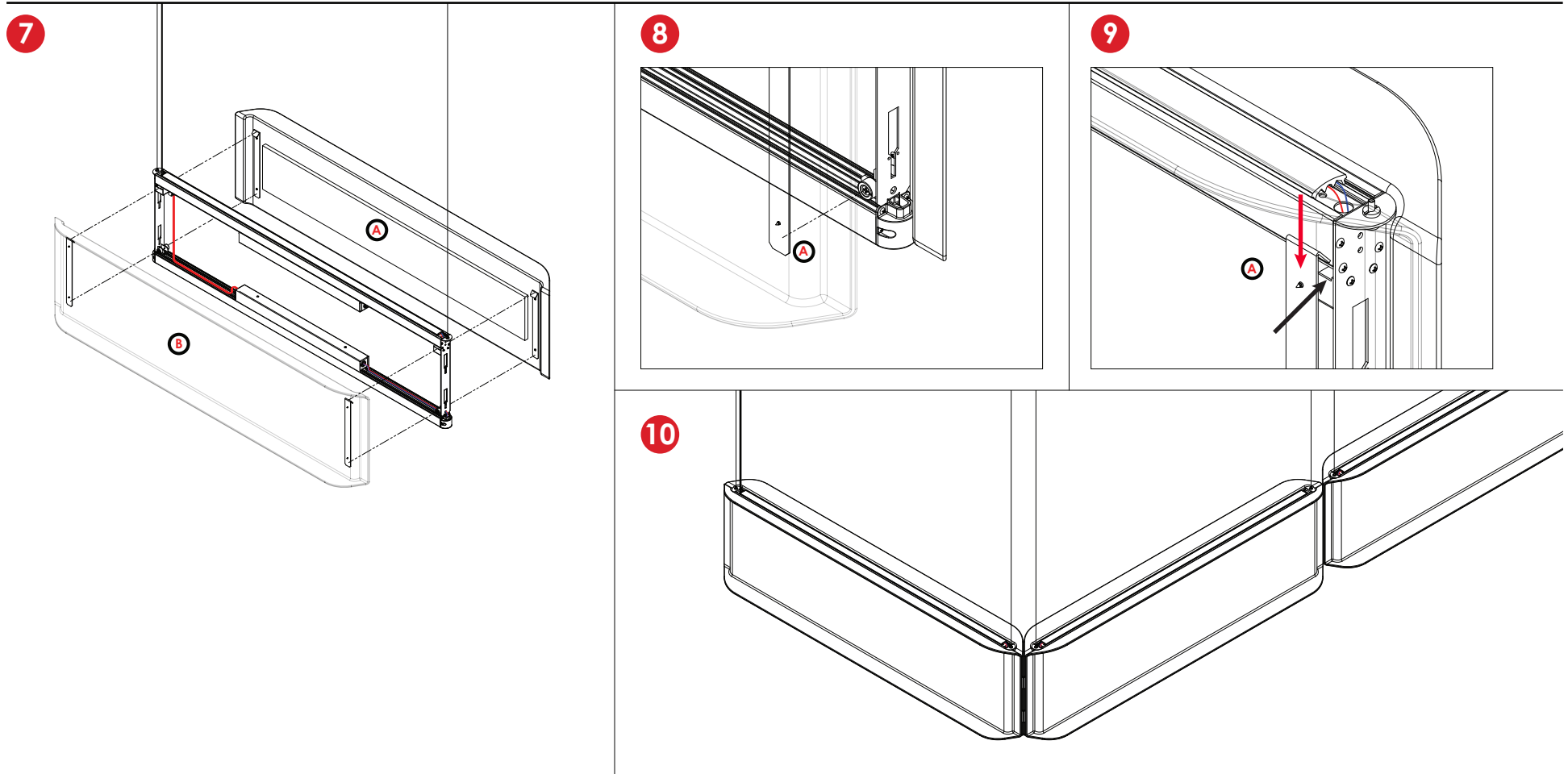
WARNING: Risk of fire and electrical shock - Fixture to be installed by qualified electrician according to local codes and ordinances. **FOR ROWS:** **WARNING:** Ensure proper handling of LEDs to limit common problems including: broken connections, loose wiring, and damage from electrostatic discharge.

- 1
- [A] - Canopy connections: White -, Black +, Green, (if dimming is required): Pink Dim+, Gray Dim-
 - [B] - Attach bracket bar with 1/4-20 stud and cover with canopy, securing with aircraft gripper.
 - [C] - Attach second aircraft gripper to ceiling or tbar grid, adjust aircraft cable height, and secure grippers by twisting safety nut clockwise.

NOMINAL SUSPENSION POINT DISTANCES (SEE ATTACHED DOCUMENT)

NOMINAL FIXTURE LENGTH	2FT	4FT
SUSPENSION POINT LENGTH	22.81"	45.71"

- 2
- [A] - Verify fixture is level.
 - [B] - If needed, adjust aircraft cable height, and secure grippers by twisting safety nut clockwise.
 - [C] - Repeat step [B] and validate that the fixture is level.
 - [D] - Excess aircraft cable should be tucked inside the body.
- 3
- [A] - Pass wires through slot and make quick connections
 - [B] - Insert joiners into lateral bracket slots.
- 4
- [A] - Align joiner holes to bracket holes (For both joiners).
 - [B] - Secure sections with the joiner thumb screws.



INSTALLATION STEPS

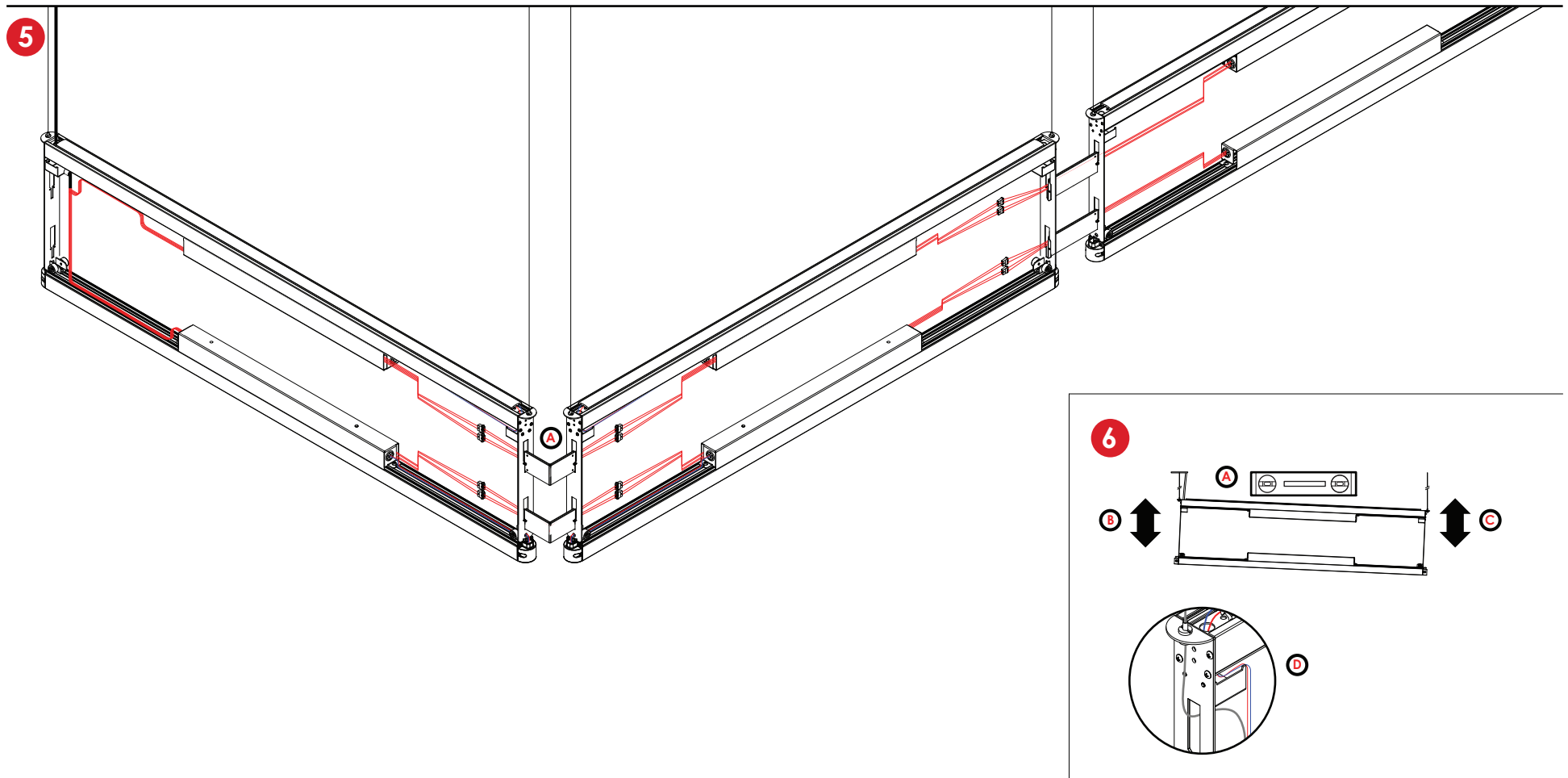
WARNING: Risk of fire and electrical shock - Fixture to be installed by qualified electrician according to local codes and ordinances. **FOR ROWS:**
WARNING: Ensure proper handling of LEDs to limit common problems including: broken connections, loose wiring, and damage from electrostatic discharge.

- 7** [A] - Always start by installing panel with extra sound absorbing insert. (Refer to steps 8 & 9 for details)
 [B] - Continue with installing opposite panel. (Refer to steps 8 & 9 for details)

- 8** [A] - Align bottom of brackets onto magnets found on lower portion of fixture.
 (Both brackets simultaneously.) The panel will hold in place without holding it.

- 9** [A]- Finish by sliding top part of felt panel bracket downward onto designated ridge.
 (Hook one side at a time and do slowly as to not scratch paint)

- 10** [A] - Repeat steps **7**, **8**, & **9** for all fixtures in pattern.



INSTALLATION STEPS

WARNING: Risk of fire and electrical shock - Fixture to be installed by qualified electrician according to local codes and ordinances. **FOR ROWS:**
WARNING: Ensure proper handling of LEDs to limit common problems including: broken connections, loose wiring, and damage from electrostatic discharge.

- 5** [A] - Repeat steps 1, 2, 3, & 4 for all fixtures in pattern. (Except for canopy installation)
- 6** [A] - Verify full patterns is level.
 [B] - If needed, adjust aircraft cable height, and secure grippers by twisting safety nut clockwise.
 [C] - Repeat step [B] and validate that the fixtures are level.
 [D] - Excess aircraft cable should be tucked inside the body.

NOMINAL FIXTURE DIMENSIONS	
	SUSPENDED
NOMINAL 2'	26.65"
NOMINAL 4'	49.55"

NOTE

All adjascent corner joined fixtures must have aircraft cables on each fixture.

Dimensions are always calculated from the center of the aircraft cable

Refer to aircraft cable installation sheet to properly install your mounting points

Refer to shop drawings for exact segment dimensions

